

ELECTRIC DEPOT

Located off of Government Street in Baton Rouge, Louisiana is the future grounds of what the city will soon call their arts district. The Electric Depot project called for a neighborhood adaptive reuse effort that responded to the need for a multi-income family housing complex. The building used was Baton Rouge's first power plant, which was built back in the early 1900s. This alone stressed the importance of the history of this building. Comprising of two buildings married together, the project involved re-designing three of the five floors found in the Electric Depot's so-called "Red Stick Social" building which is currently used as an event and gaming space. The challenge was to provide living spaces of 1, 2 and 3 bedroom apartments as well as a terrace and community space. All the while highlighting the history of the building and being sure to acknowledge multi-income future residents. Throughout the space, guests will find that there is much implementation of previous materials such as the preserved metals seen throughout, re-use of the massive windows and an upscaling of the original brick from the power plant. The floorplan is strategically planned out to make the most of the space provided. A key element in my design is I wanted to somehow use the original arches in the building to create my apartments from. From there I wanted to ensure that there was at least one window in each apartment. This was challenging since the layout of the floors were not exactly even with the windows from the original design. As far as my color and materials go, I wanted to incorporate colors I felt reminded me of the early 1900s, stepping back into the roots of the building. I wanted to have warm, inviting, desirable colors. Besides that, the most important ideal for this project was to create apartments that pertain to all incomes. Some apartments will be on the higher end, equip with things such as more square footage and private balconies, while some meet just the needs for a simple design. Overall the re-design of the building fully encapsulates a new perspective to what the city can have to rejuvenate the historic Government Street.



KITCHEN/LEVEL 2A



LIVING ROOM/LEVEL 2A



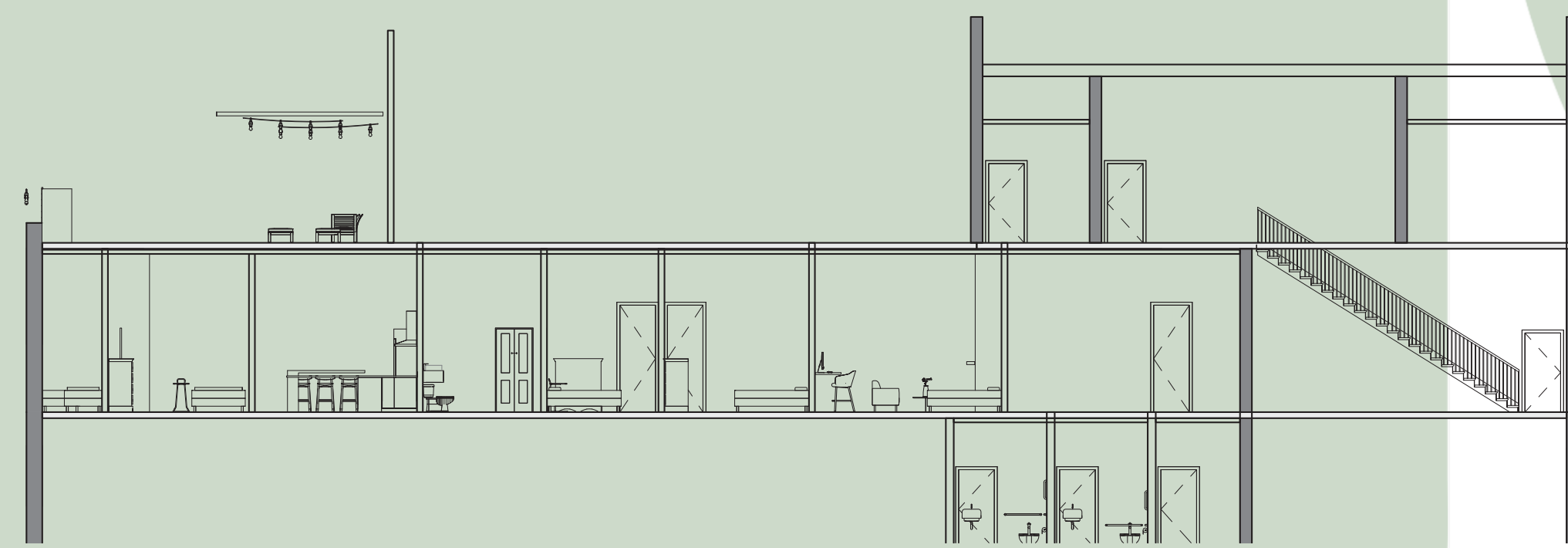
2BR BEDROOM/LEVEL 3A



PRIVATE OUTDOOR TERRACE/LEVEL 3A



PUBLIC GYM/ LEVEL 3A



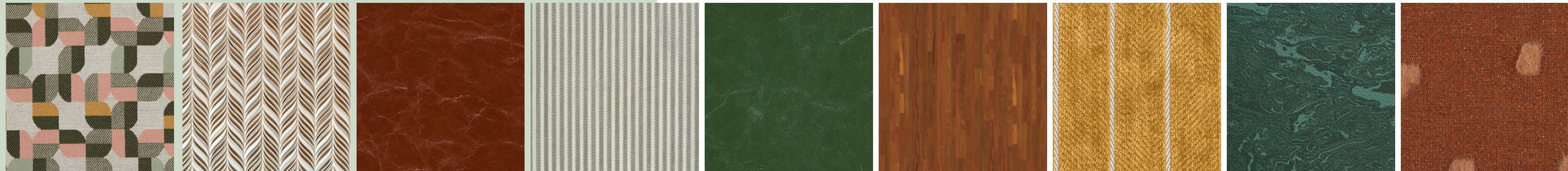
WEST SECTION A-A

SCALE 1/16=1'-0"

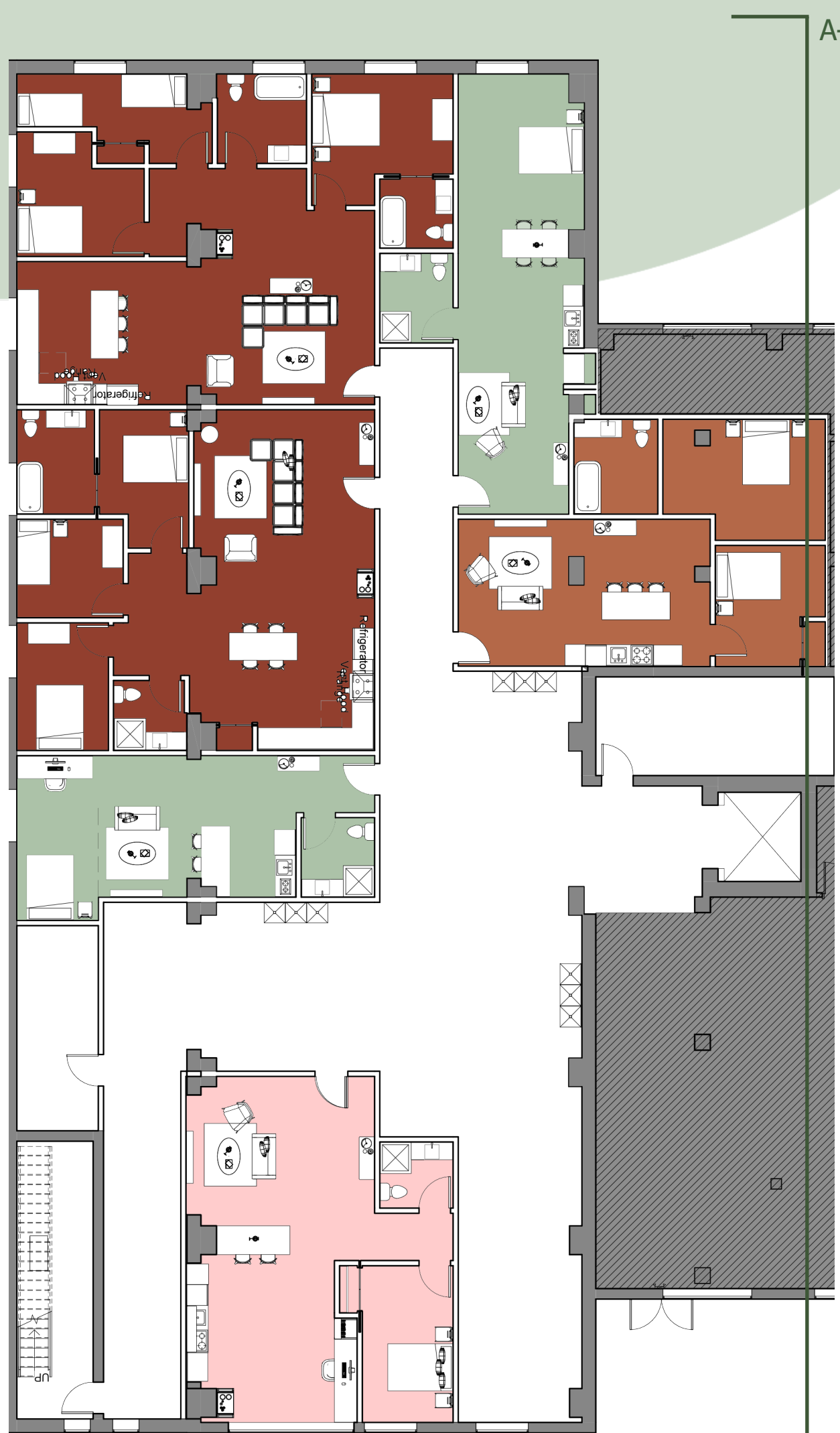


EAST SECTION B-B

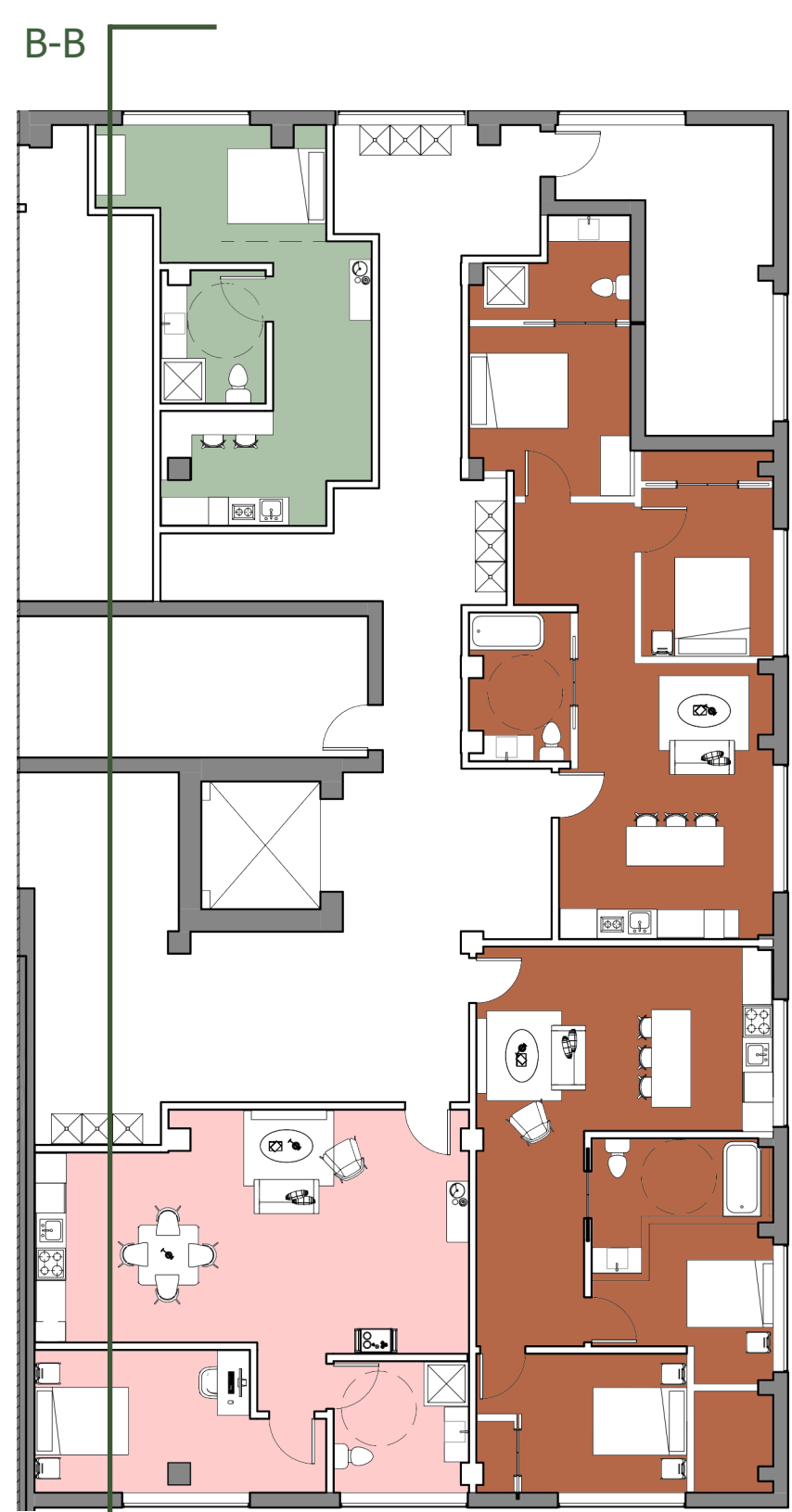
SCALE 1/16=1'-0"



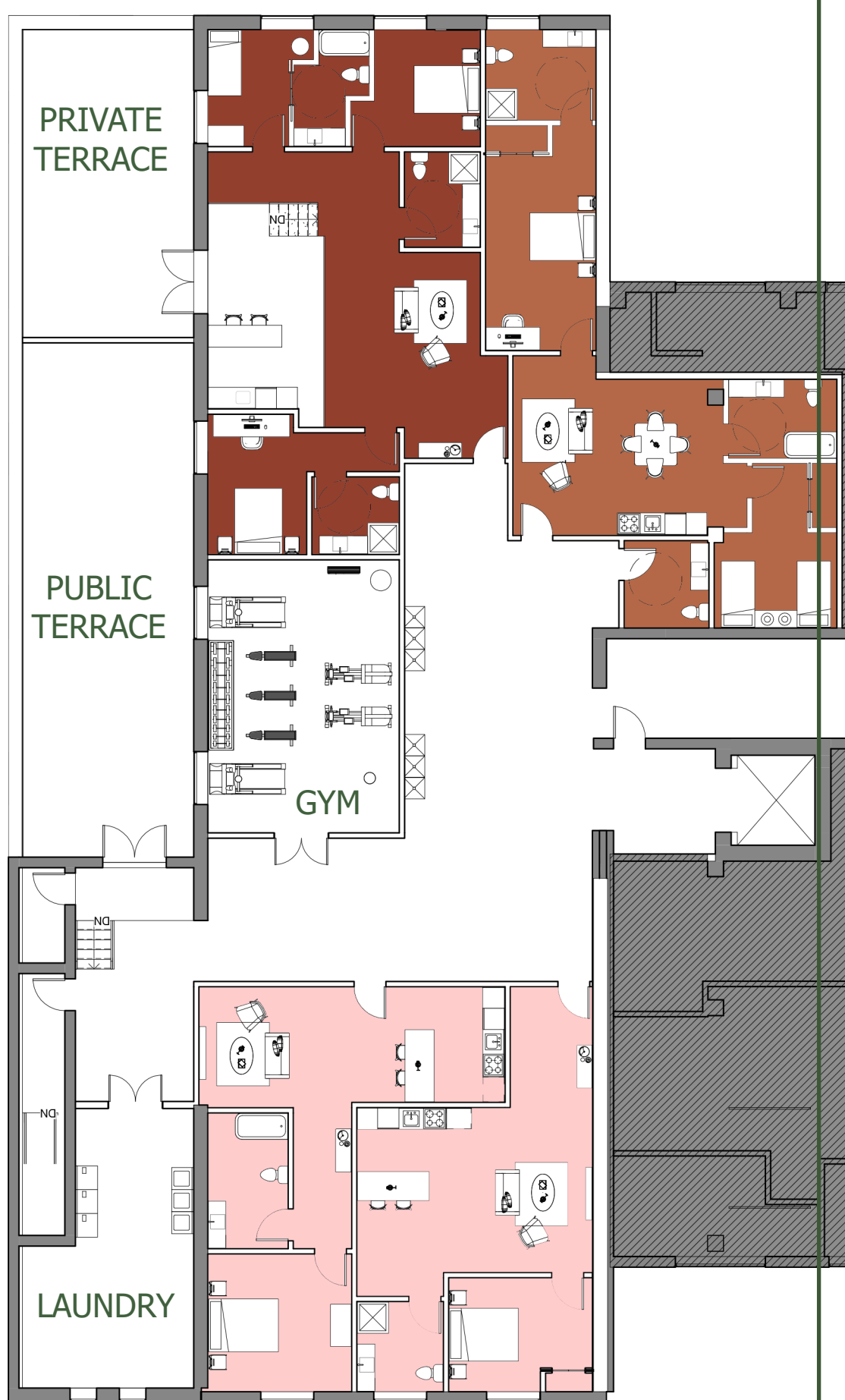
MATERIALS SELECTION



LEVEL 2A
SCALE 1/8=1'-0"

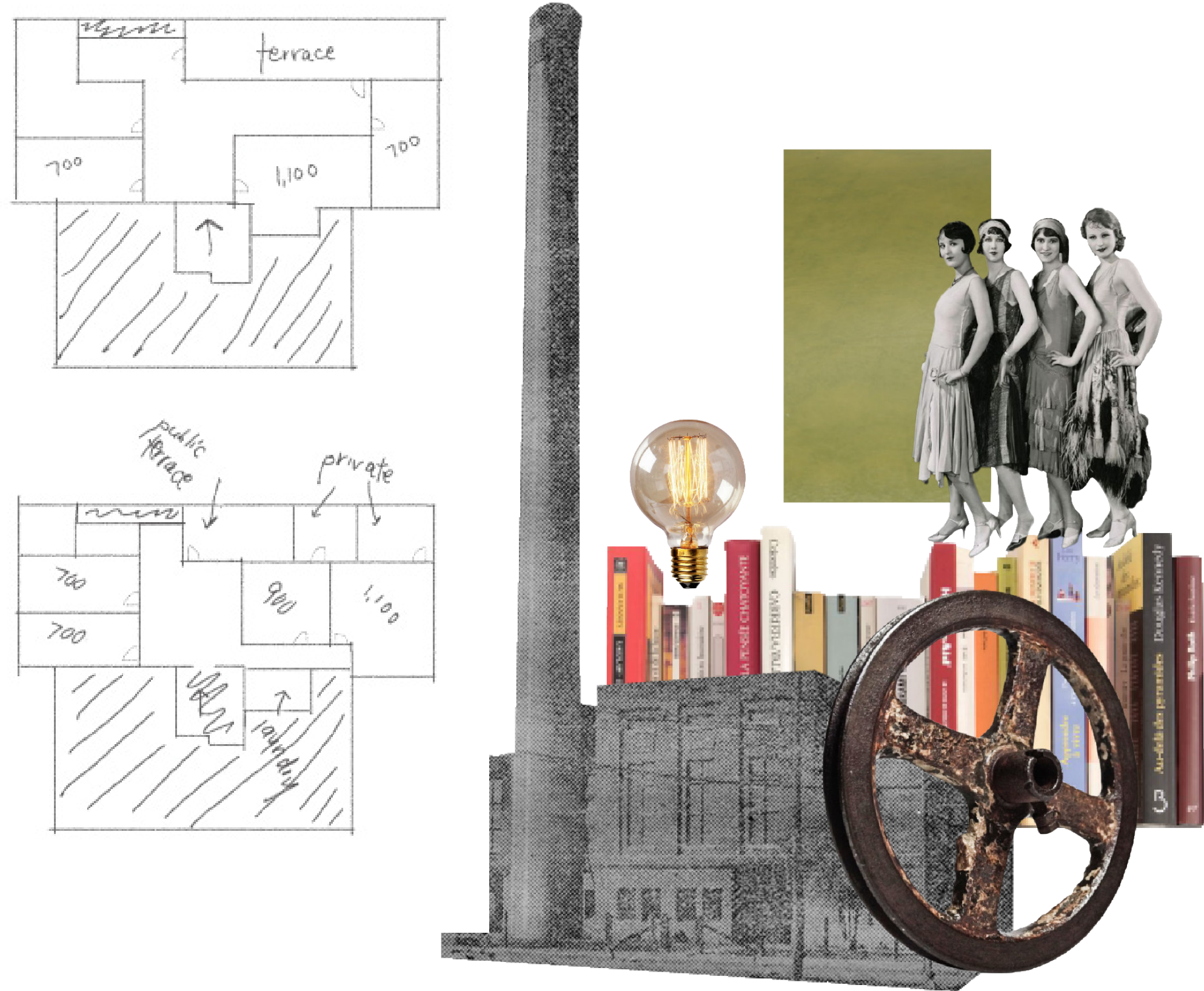


LEVEL 2B
SCALE 1/8=1'-0"



LEVEL 3A
SCALE 1/8=1'-0"

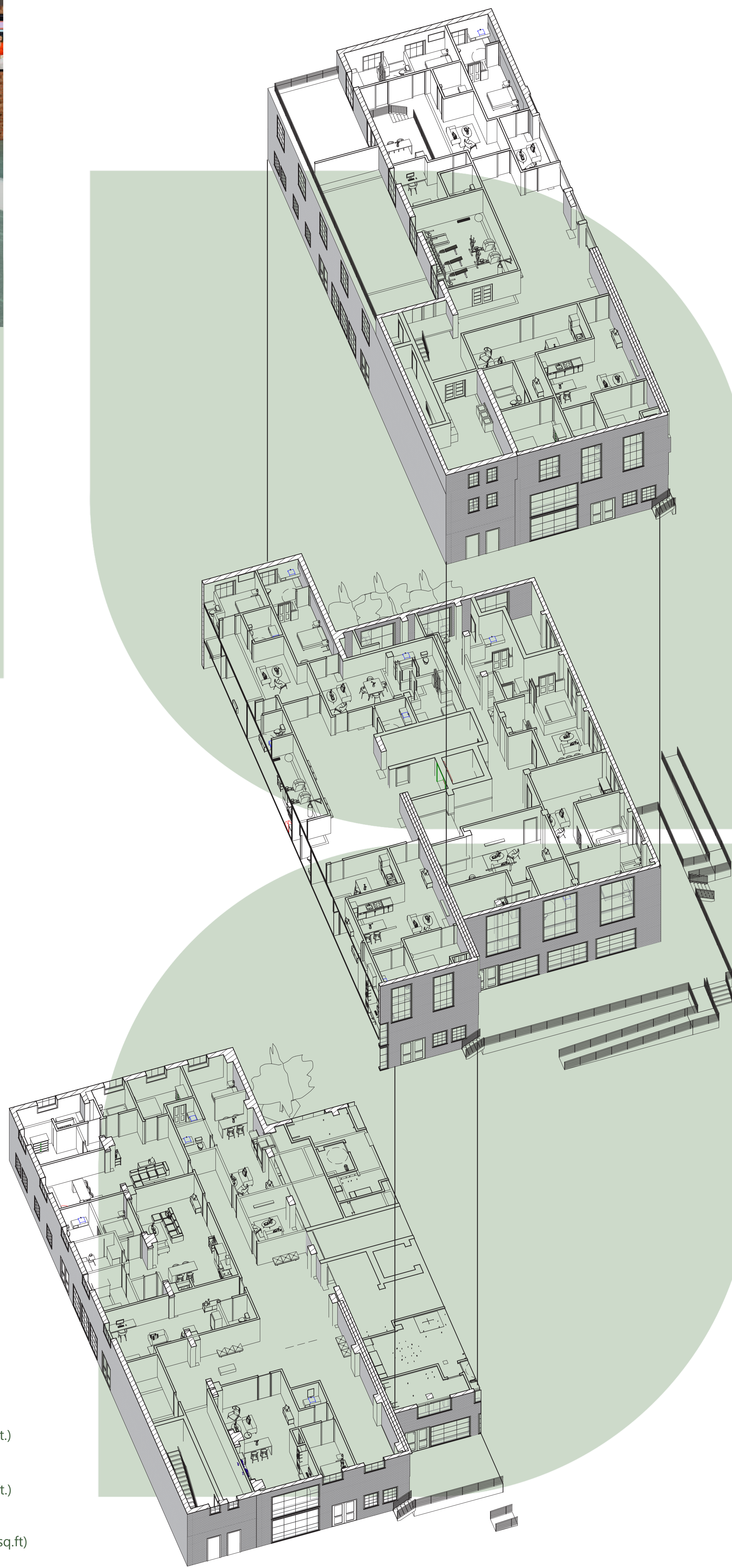
- studio (<650 sq. ft.)
- one bedroom (700 sq. ft.)
- two bedroom (900 sq. ft.)
- three bedroom (1,100 sq. ft.)



PROCESS WORK & INSPIRATION



SITE LOCATION: 1509 GOVERNMENT STREET



MARGUERITE H. EPPLING